

TESTINGWHIZ

INSTALLATION GUIDE

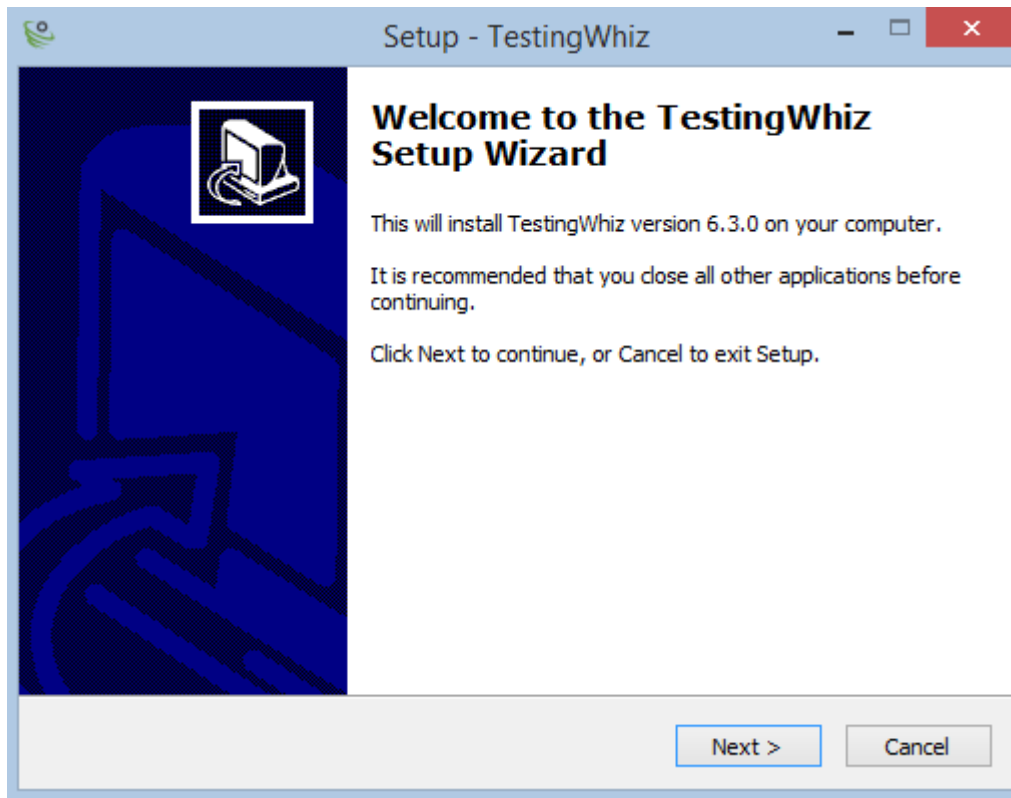
TestingWhiz Version: 6.3.0

Document Created: 23rd April, 2019

STEPS TO INSTALL TESTINGWHIZ-ENTERPRISE EDITION

Step 1:

- Double click on the **TestingWhiz.exe** file, you have downloaded
- TestingWhiz Setup Wizard window opens on your screen (as below)



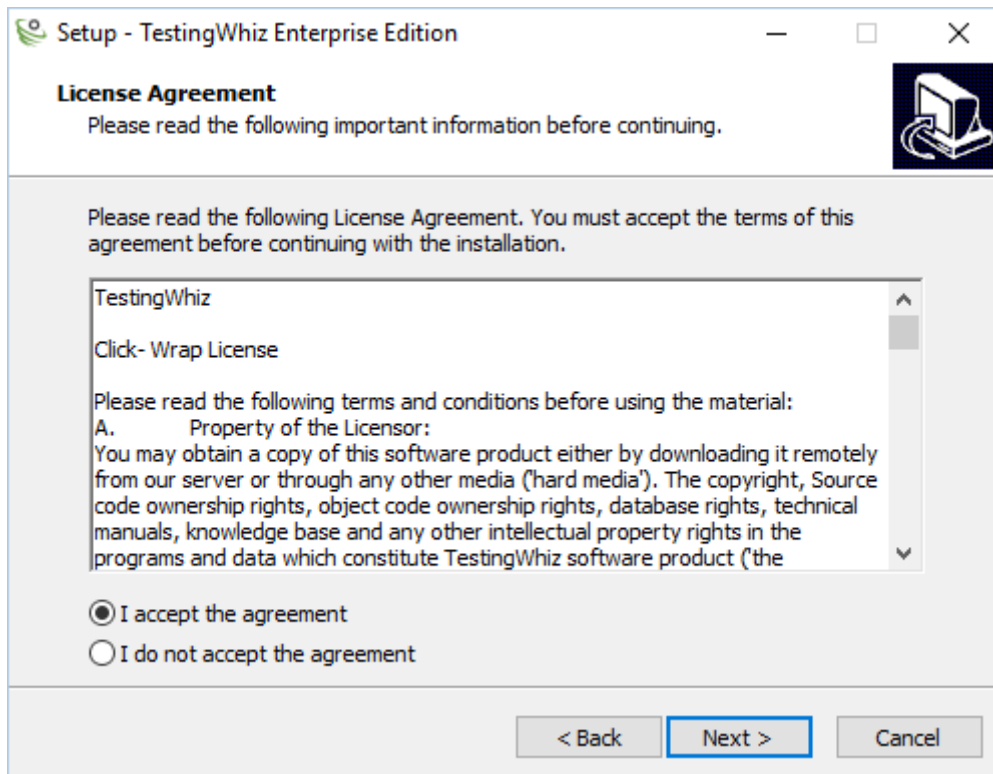
Step 2:

- Click **Next** to proceed to Installation Wizard

Step 3:

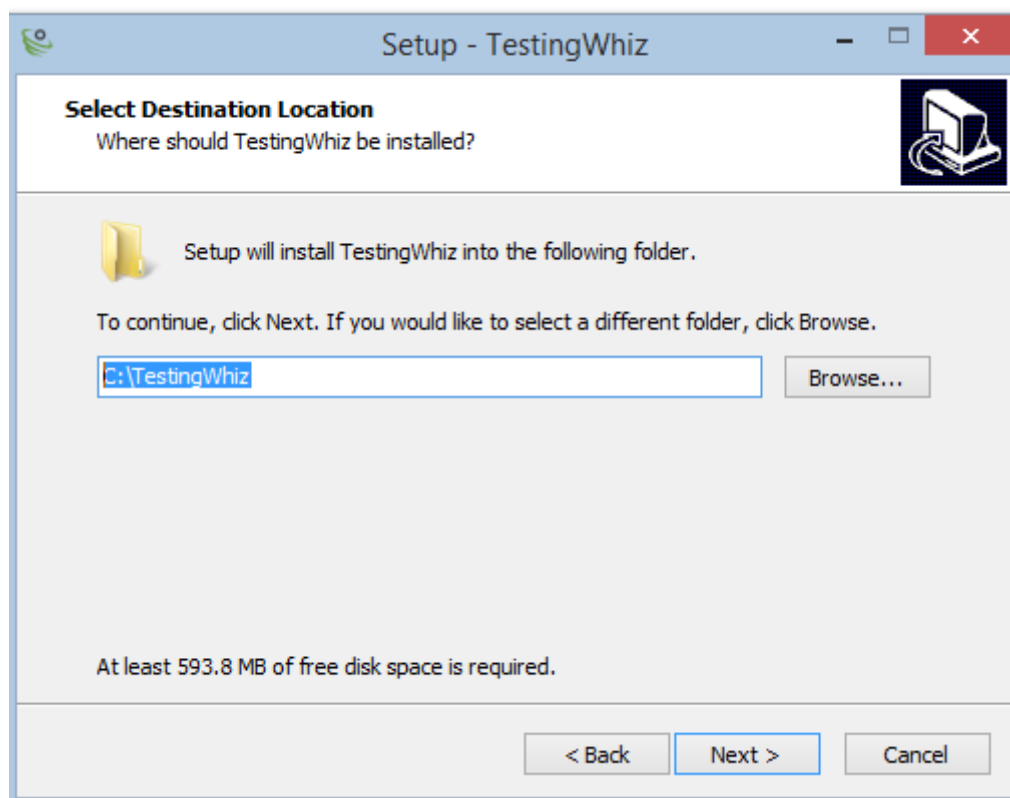
In the License Agreement Screen:

- Please read the License Agreement
- Once you agree, click on the “**I accept the agreement**” radio button
- Now click **Next**



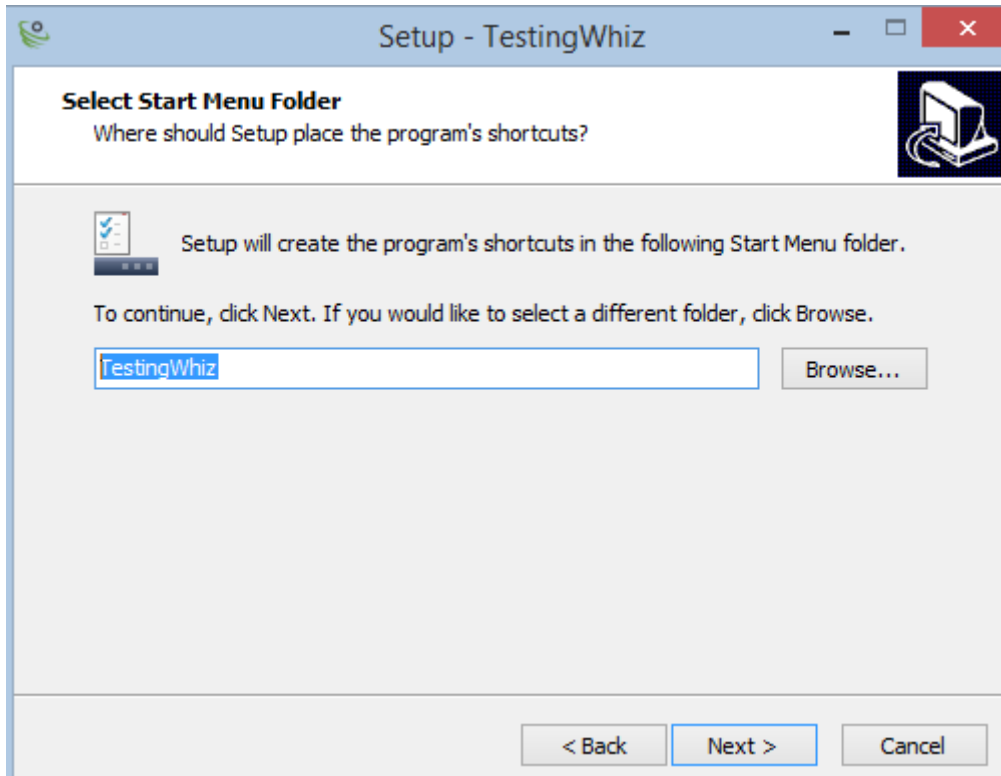
Step 4:

- Click on “**Browse**” to select the location of TestingWhiz
- Default location: “**C:\TestingWhiz**”



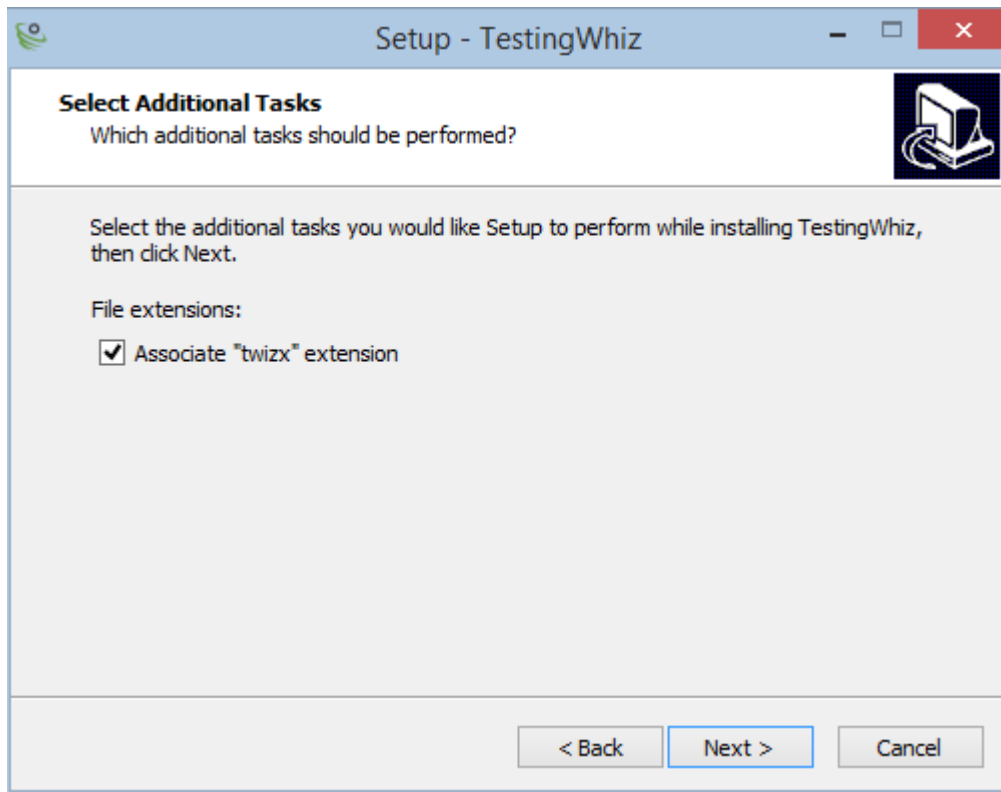
Step 5:

- Click **Browse** to have different folders for TestingWhiz shortcuts; or click Next



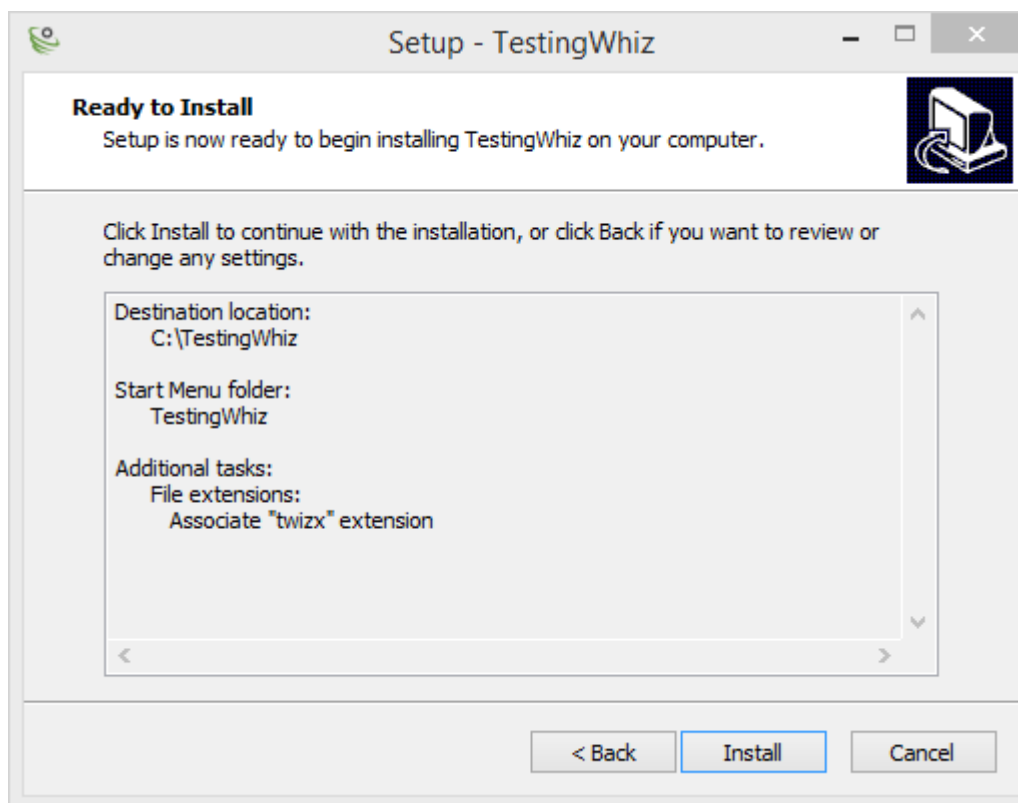
Step 6:

- In case you want to add-on the “.twizx” extension for TestingWhiz, select the option and click **Next**



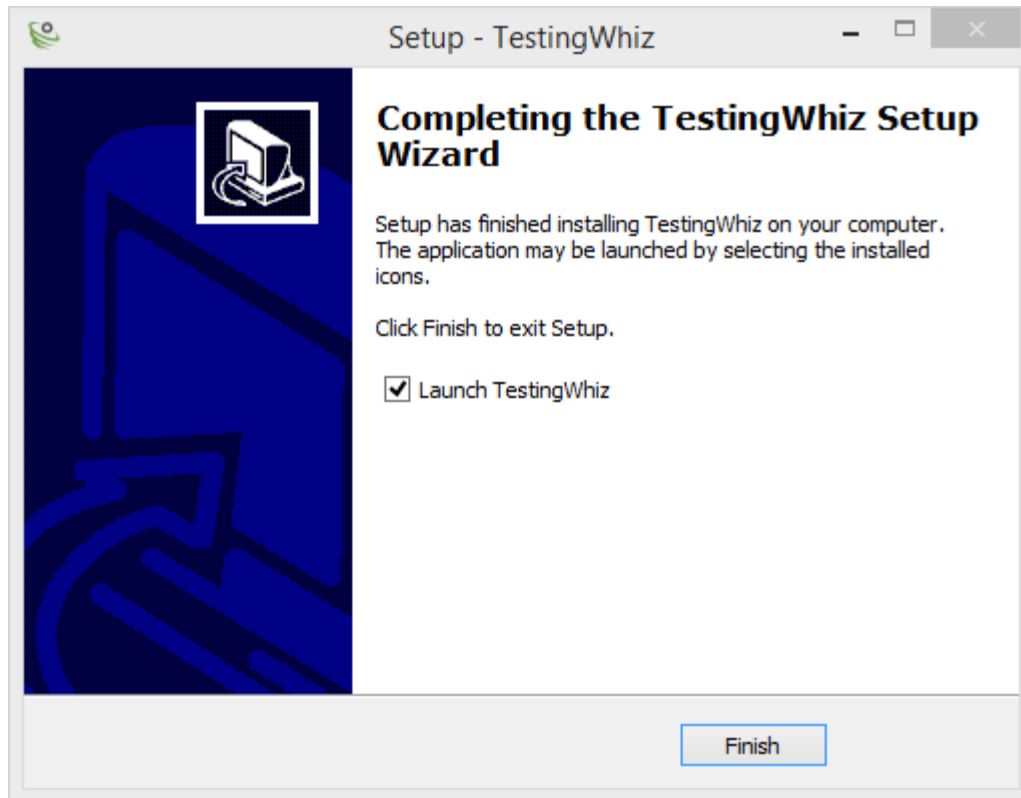
Step 7:

- This screen will display your choices regarding Destination location, shortcut locations and selected extension
- If you agree with the settings displayed on the screen, click **Install** to continue with installation
- You can click on **Back** to change any settings



Step 8:

- TestingWhiz will be installed on your system
- After completion of TestingWhiz installation on your system, below window opens



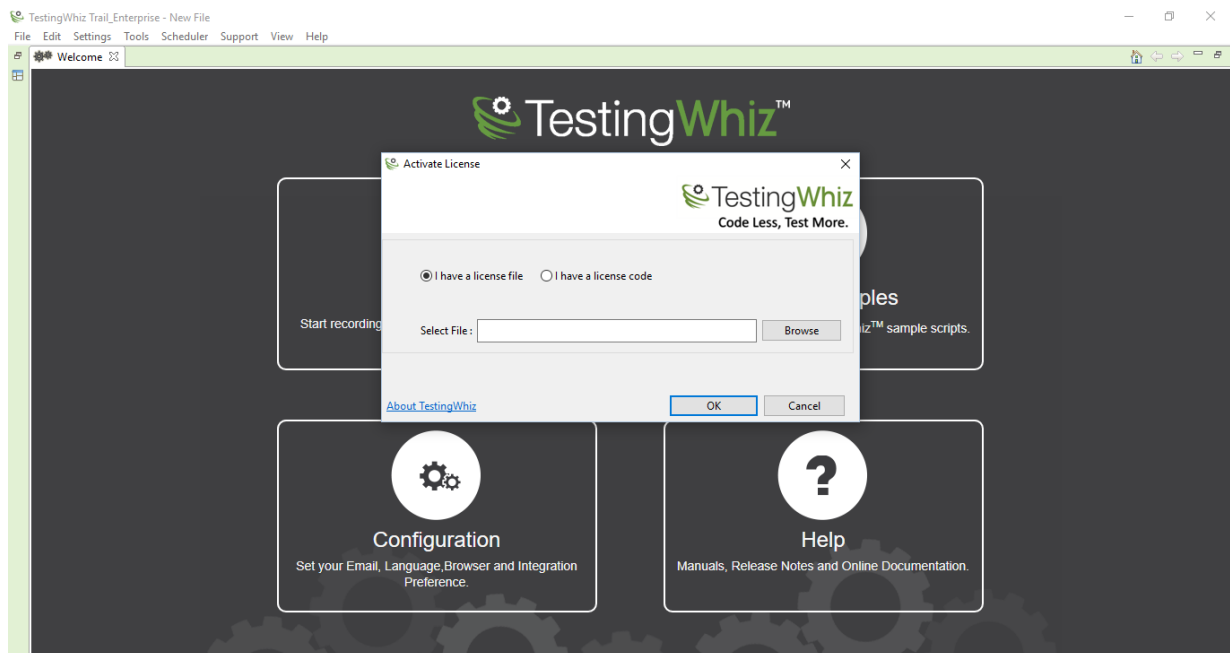
Step 9:

- You have successfully installed **TestingWhiz** on your system
- Click on **Finish** to launch TestingWhiz

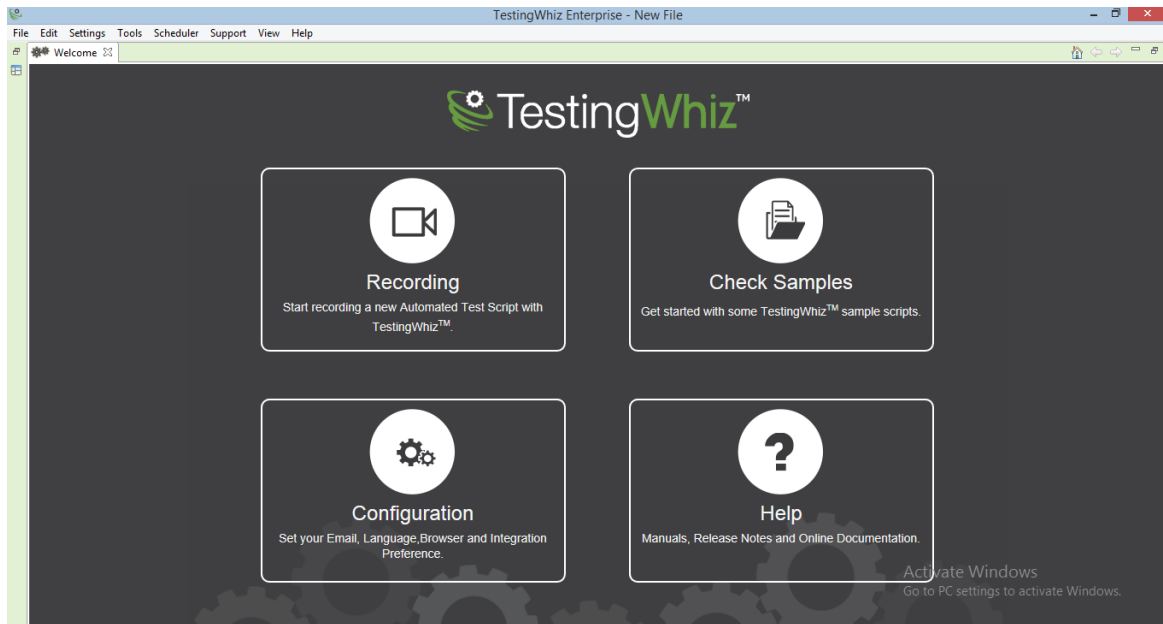
Step 10:

Congratulations, you have successfully installed TestingWhiz!

- You would have received License.txt file on your registered email id
- Launch TestingWhiz and click on **Browse** button to upload **License.txt** file which you have received on registered email id
- Click on **OK** to start using TestingWhiz



- TestingWhiz will re-launch
- Now you will be able to explore TestingWhiz features and functions displayed on TestingWhiz Welcome screen



Step 11:

- To get familiar with TestingWhiz UI, [Click](#) here to watch an helpful video on YouTube
- For more information, you can also visit [TestingWhiz User Manual](#)

SYSTEM REQUIREMENTS TO INSTALL TESTINGWHIZ

Below are the simple system requirements that will be needed to Install TestingWhiz in your machine.

System Requirements

| Requirements | Description |
|------------------|--------------------------|
| Operating System | Windows 7 and higher |
| Processor | Intel Pentium 4 or later |
| RAM | 4 GB (8 GB Recommended) |
| Free Disk Space | 4 GB |
| Java Version | JRE 8 or later |

CONTACT US

Address: Cygnet Infotech LLC, 125 Village Boulevard, Suite 315, Princeton, NJ 08540, USA.

Support: support@testingwhiz.zendesk.com

Sales: sales@testing-whiz.com

Inquiries: info@testing-whiz.com

Contact: contact@testing-whiz.com