



TestingWhiz

Code Less, Test More

# Sauce Labs Mobile Integration

## Contents

1. Introduction .....	3
2. Sauce Labs Configuration with TestingWhiz .....	3
2.1. Pre-requisites .....	3
2.2. Configuration Steps to add Sauce Labs credential in TestingWhiz tool.....	3
2.2.1 Configuration Steps to get API key from Sauce Labs account .....	5
2.3. Configuration Steps to create an Emulator/Real Device Browser Profile in TestingWhiz.....	8
3. Script Execution .....	12

## 1. Introduction

This document shows you the step by step guide on how to setup and configure Sauce Labs with TestingWhiz tool

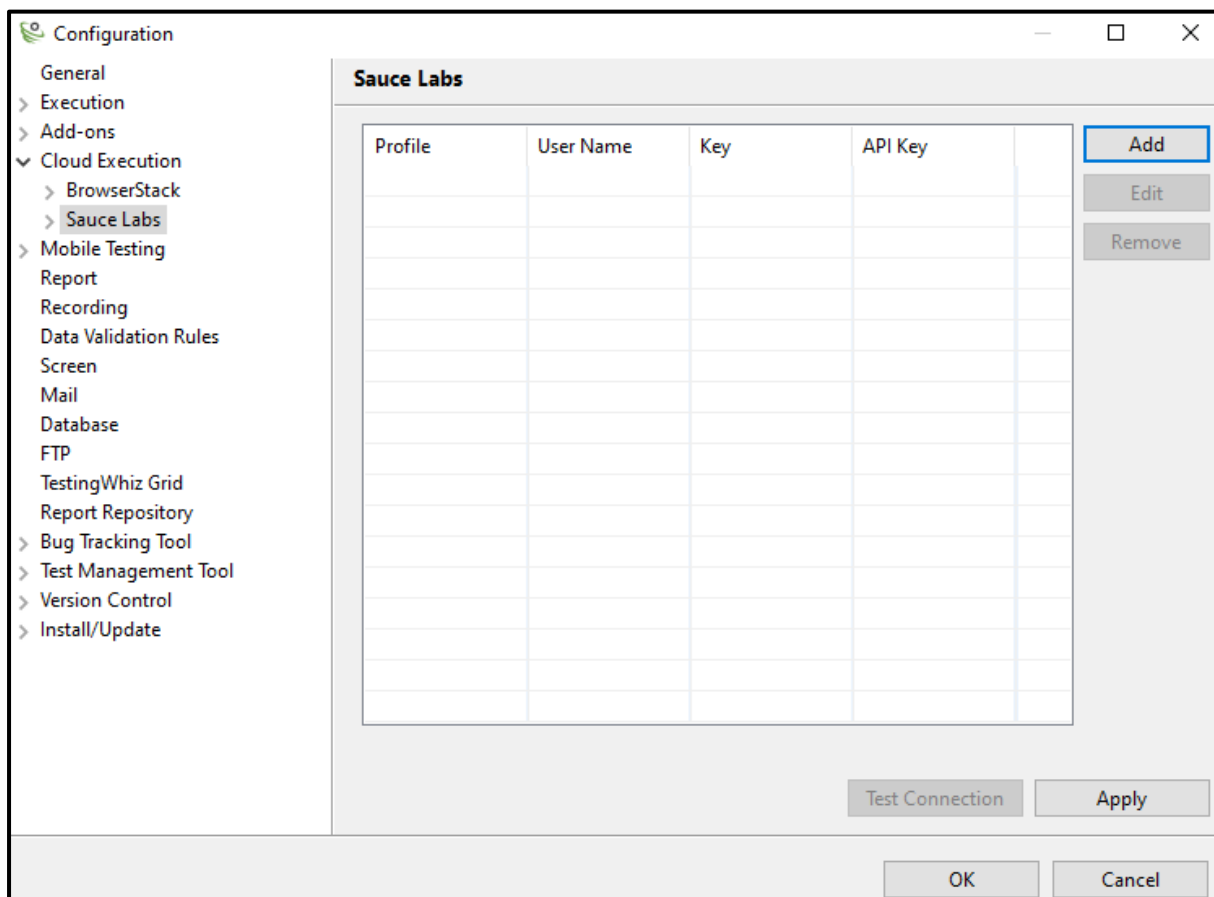
## 2. Sauce Labs Configuration with TestingWhiz

### 2.1. Pre-requisites

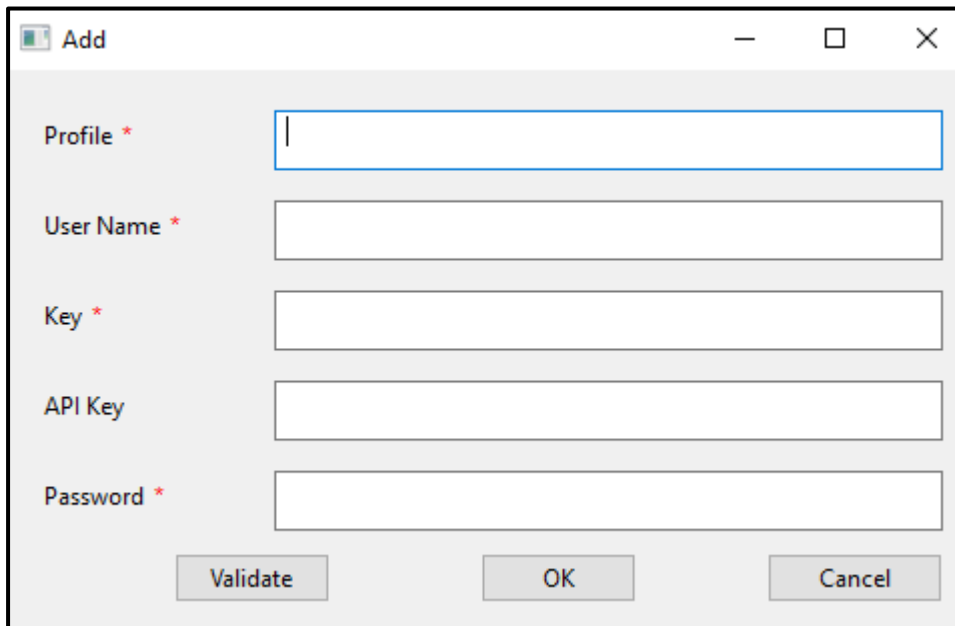
Users should have Sauce Labs credential.

### 2.2. Configuration Steps to add Sauce Labs credential in TestingWhiz tool

1. Go to TestingWhiz Settings --> Configuration---> Cloud Execution and Click on Sauce Labs



- Click on Add button, to add the Sauce Labs instance, user needs to define the following details in the TestingWhiz Application



- **Profile:** To define profile name as per user requirement.
- **Username:** To define the username, user has to provide Username from Sauce Labs credentials
- **Key:** To define the Key value, User has to fetch the Key from Sauce Labs webapp.
- **API Key:** Define API Key to execute the Script on Mobile Real Device browser (Steps to get API key are explained in section 2.2.1)

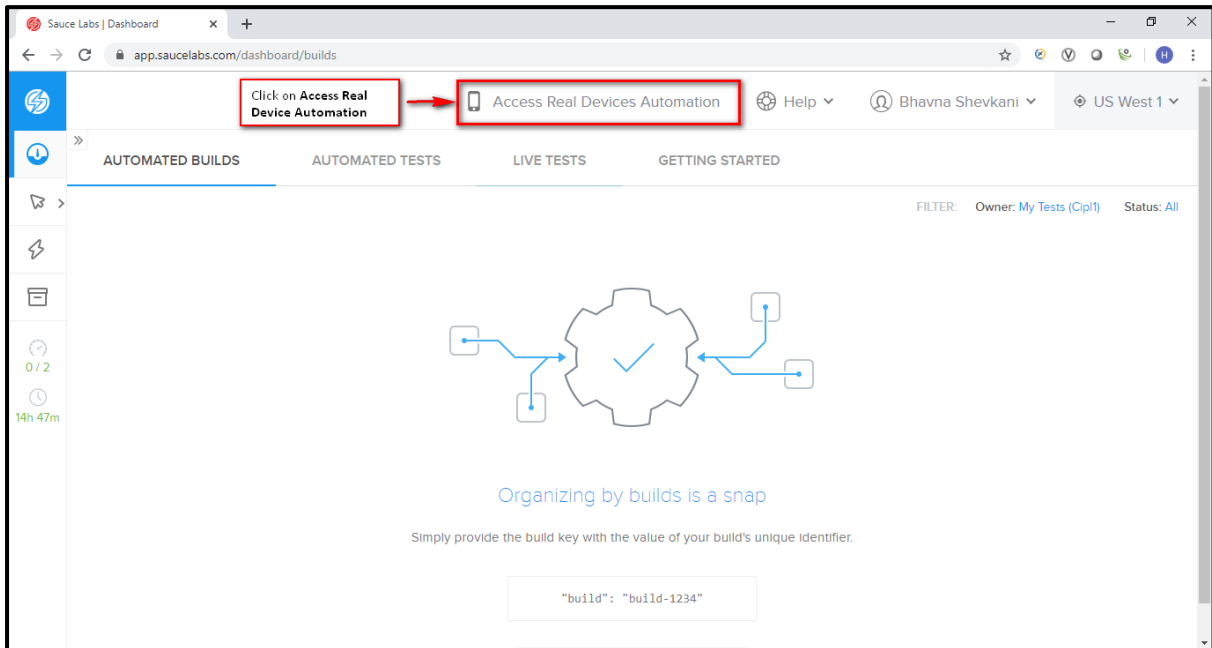
**NOTE:**

- *API key is only mandatory when user wants to execute the script on Mobile Real Device browser, otherwise keep the API Key field blank.*
  - *User must provide the latest API Key ( Steps to get API key are explained in section 2.2.1 )in Real Device profile configuration before executing script on Mobile Real Device browser .*
- **Password:** To define the password, user has to provide password from Sauce Labs credentials
  - **Validate:** To check whether the credential are valid, user needs to click on Validate button.
  - **OK:** To add the profile click on OK button.
  - **Cancel:** To dismiss the dialog box, user needs to click on Cancel button.

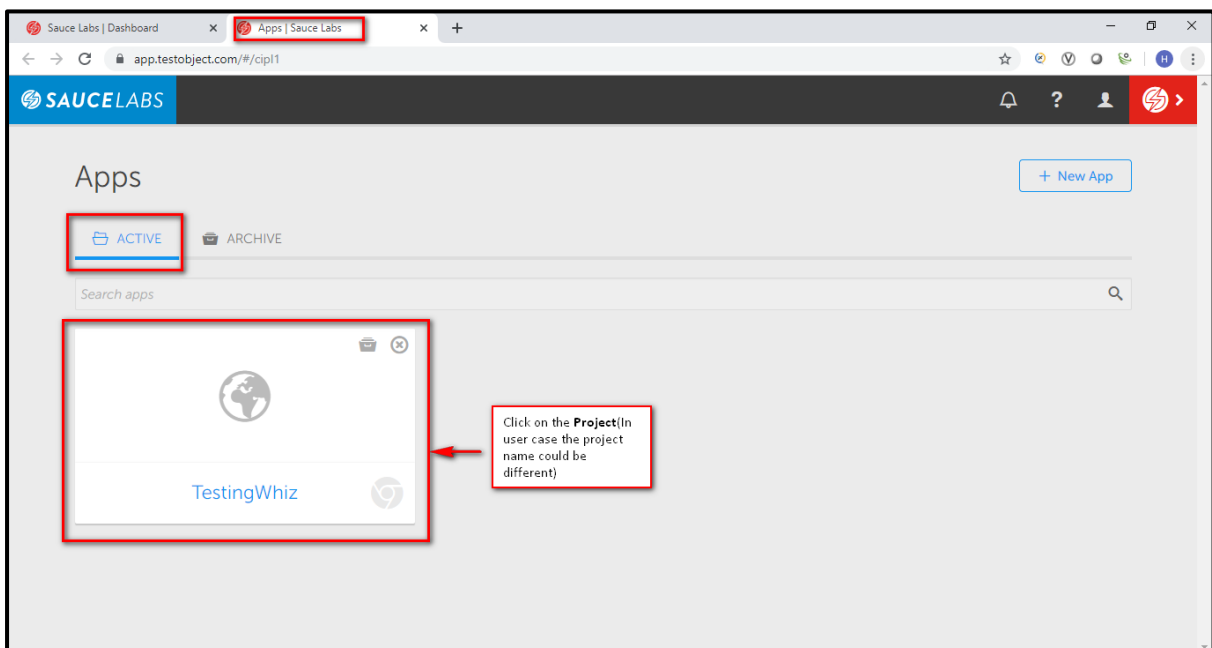
## 2.2.1 Configuration Steps to get API key from Sauce Labs account

➤ To define API Key, User has to perform following steps on web app

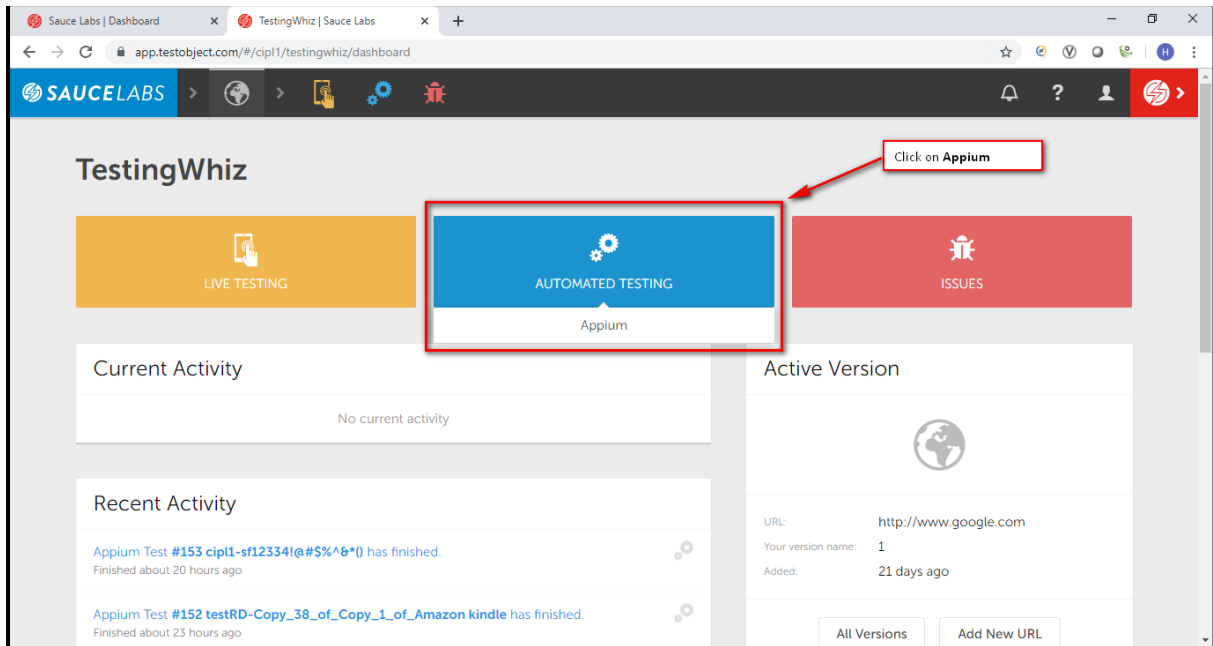
- Open URL <https://Sauce Labs.com/> and provide the Sauce Labs credentials.
- Go to Dashboard and click on Access Real Devices Automation.



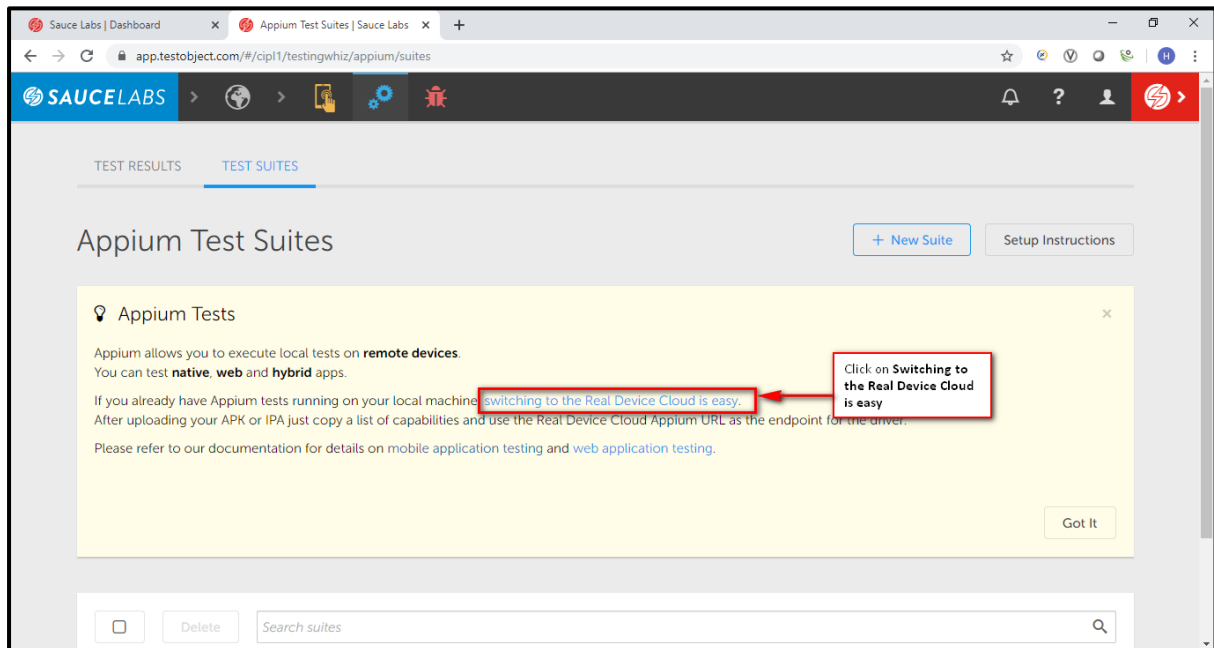
- New Tab will get open, Inside Active click on Project.



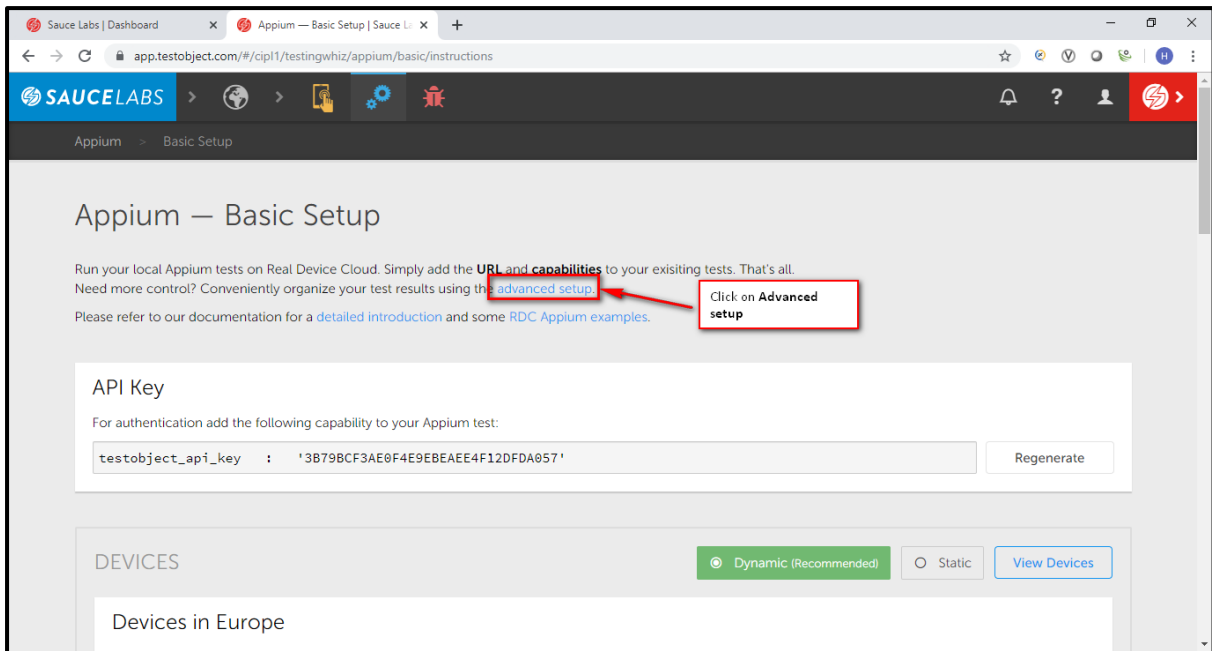
- Inside Project Dashboard, Go to Automated Testing and click on **Appium**.



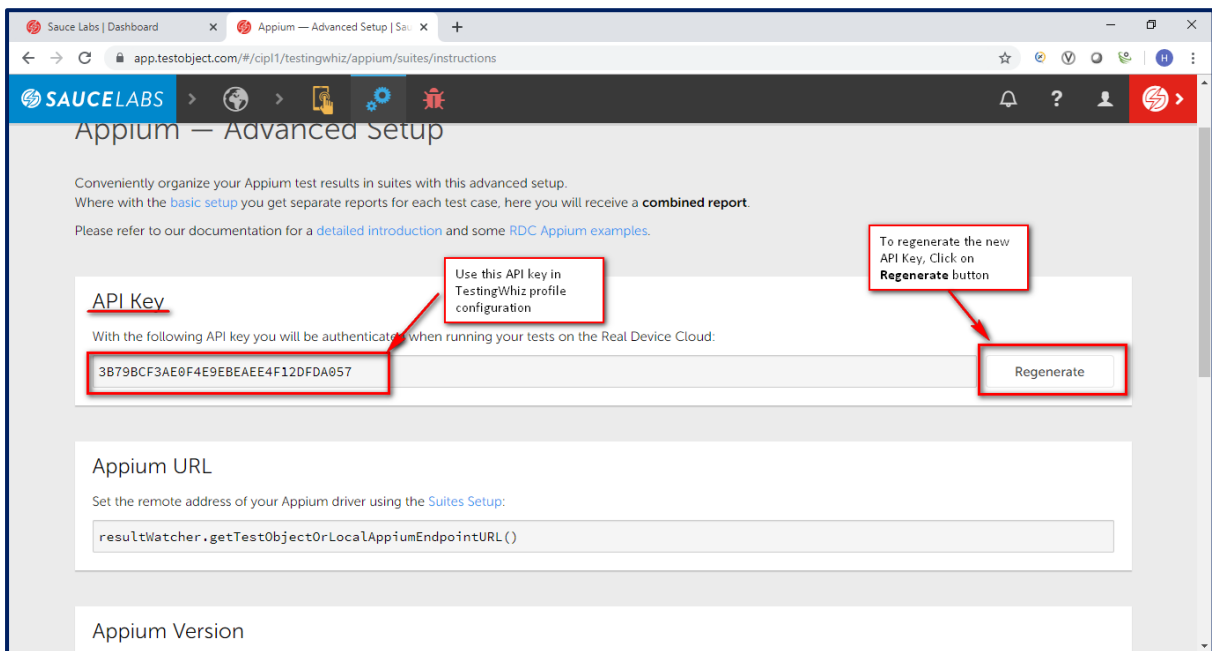
- Inside Appium Test Suites click on **Switching to the Real Device Cloud**



- In Appium - Basic Setup click on **Advanced Setup**

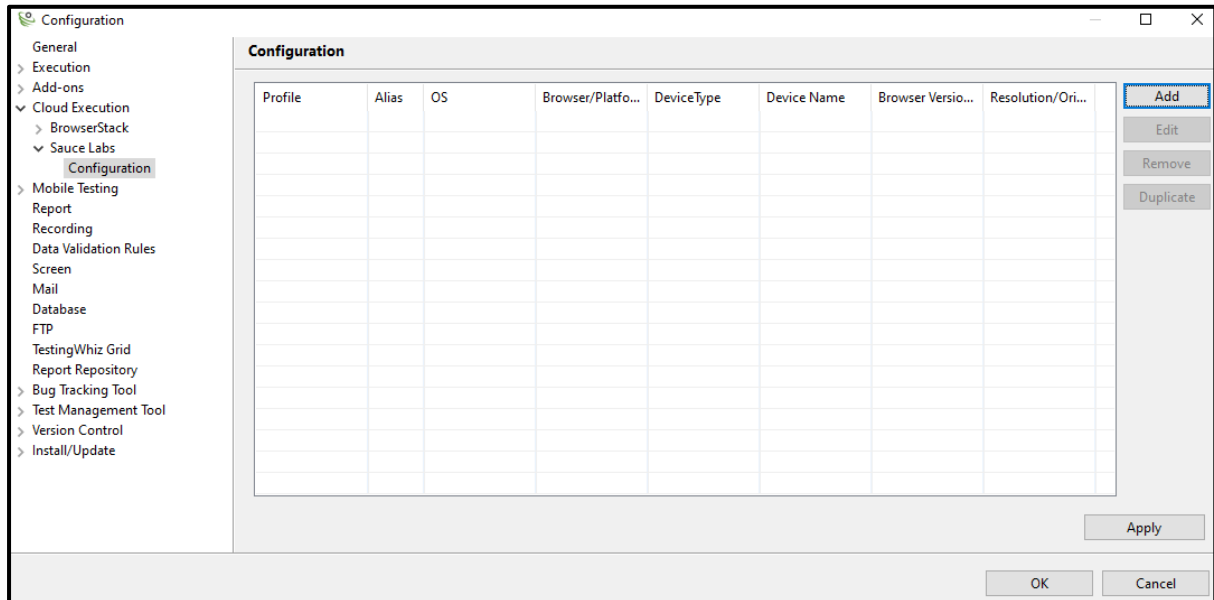


- In Appium - Advanced Setup, Use this API Key in TestingWhiz Sauce Labs Real Device profile configuration

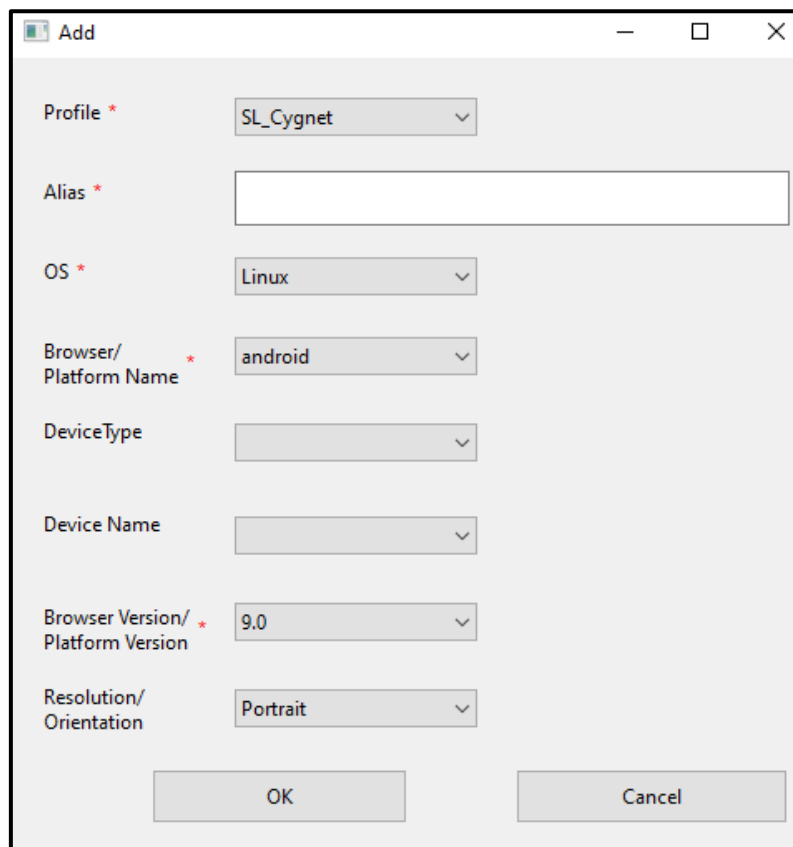


### 2.3. Configuration Steps to create an Emulator/Real Device Browser Profile in TestingWhiz.

- Open Sauce Labs Configuration

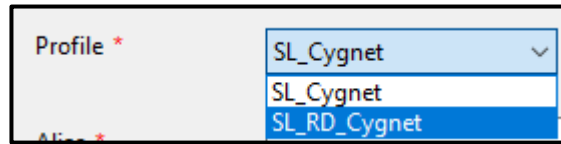


- Click on Add button and define the required details to create a new Emulator/Real Device browser profile.



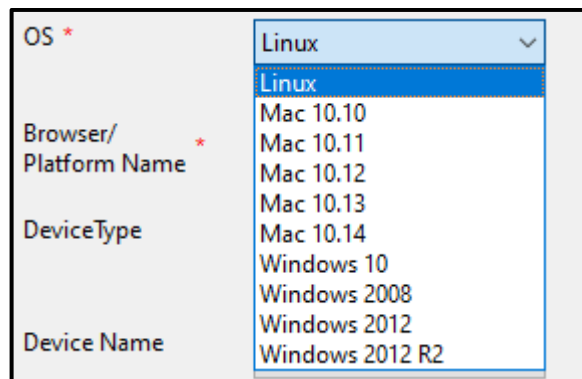


**Profile:** To define a profile, user has to select the profile from drop down.



**Alias:** To define an alternative name as per user requirement.

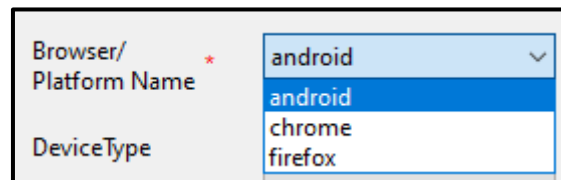
**OS:** To define OS, user must select the OS from dropdown



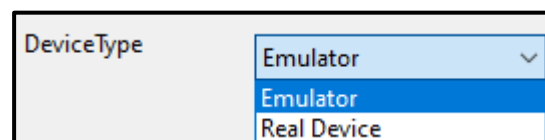
**NOTE:** Select Linux option from the OS field drop down to set Android Device configuration.

(Real Device/Emulator support is not available in MAC 10.10 & MAC 10.11)

**Browser/Platform Name:** Select the browser Name or Platform name from the drop down, the Browser Name or Platform Name details will be listed according to the selection of OS.



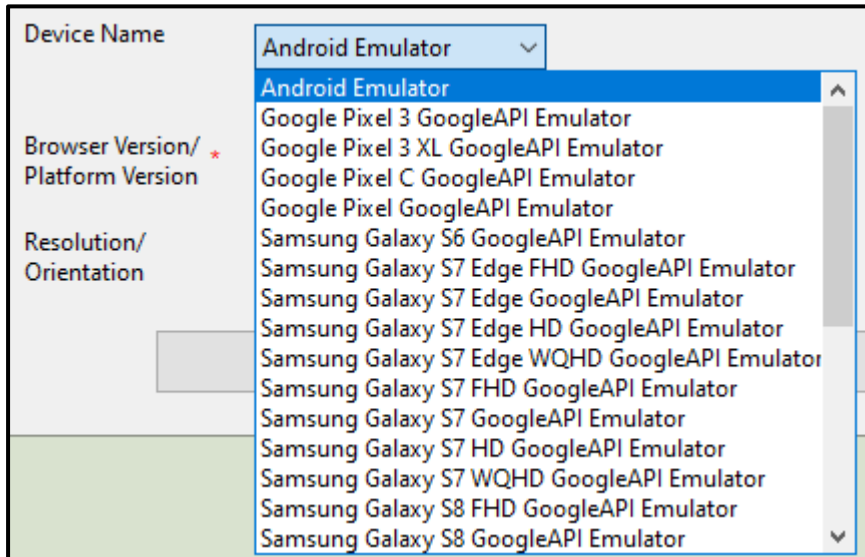
**Device Type:** To define type of device user has to select the device from the Device Type drop down, the Device Type details will be listed according to the selection of Browser Name or Platform Name.



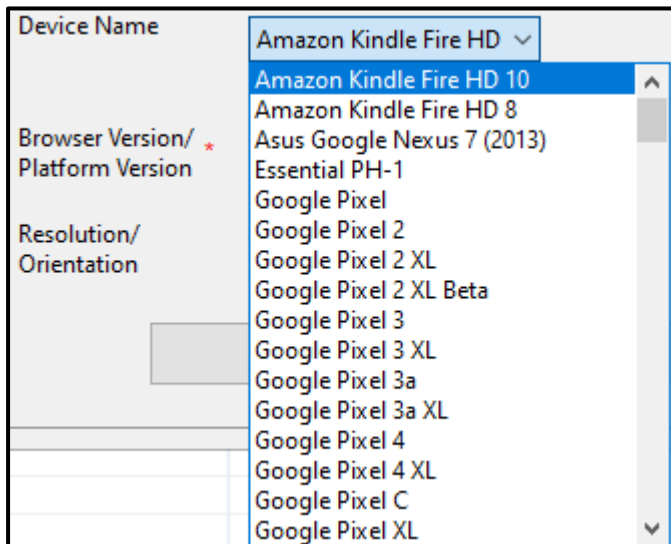
**NOTE:** The Real Device will only be working when user specify the API Key inside Sauce Labs profile configuration.

**Device Name:**

- To define the Emulator Device Name user has to select the device from the Device Name drop down field, the Device Name details will be listed according to selection of Device Type.



- To define the Real Device Name user must select the device from the Device Name drop down field, the Device Name details will be listed according to selection of Device Type.



**Browser Version/ Platform Version:** To define the Browser Version/ Platform Version user must select the browser/ platform from the drop down. The Browser Version/ Platform Version will be listed according to selection of Device Name.

Browser Version/Platform Version	5.1
Resolution/Orientation	6.0
	8.0

**Resolution/Orientation:** To define the Resolution/ Orientation user must select the resolution/browser from the drop down. The Resolution/ Orientation Version will be listed according To selection of Browser Version/ Platform Version.

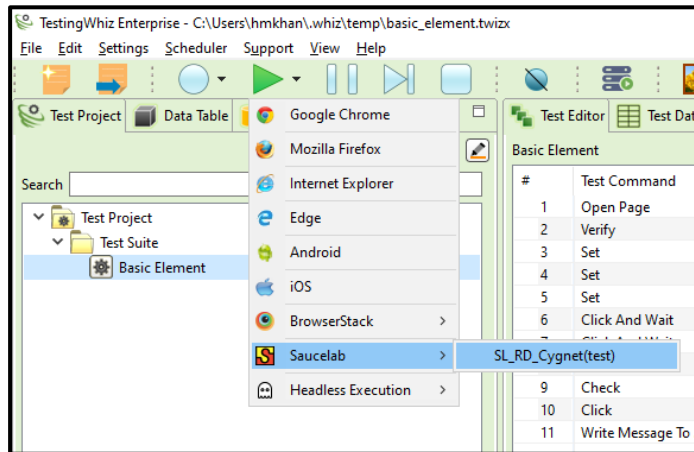
Resolution/Orientation	Portrait
	Landscape

- After defining the above details click on OK and Apply button.
- The newly created browser detail will be listed

Profile	Alias	OS	Browser/Platfo...	DeviceType	Device Name	Browser Versio...	Resolution/Ori...
cipl1	Ama...	Linux	android	Real Device	Amazon Kindl...	5.1.1	Portrait

### 3. Script Execution

- Open the script, Go to Execute > Sauce Labs > Select Device



- To check the execution details, user can follow up with the TestingWhiz Console Log & Report or In Sauce Labs execution history.